

# DELTA®-RADONSPERRE

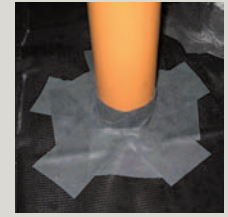
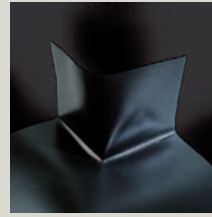
## Technical Data Overview:

Material	Polyolefin
Colour	Black
Surface	Chequered, Rough
Weight	approx. 280 g/m <sup>2</sup>
Thickness	approx. 0.4 mm
Dimensions	Length: 25 m Width: 50/150/400 cm Folded: 4 m x 8 m
Resistance	Compatible with bitumen
Water column	4 m, 72 h
Low temperature creasing resistance	No breaks, no cracks.
Tear strength as per DIN 16726	Longitudinal: approx. 150 N/5 cm Transversal: approx. 100 N/5 cm

# DELTA®-Accessories for DELTA®-RADONSPERRE.

Dörken makes your life easier – systematically.

You are sure to appreciate these handy DELTA®-Accessories:



### DELTA®-THAN

Permanently elastic sealing compound for fixing and seam jointing of DELTA® sheet products. Also can be used to secure connections.

### DELTA®-MAUERWERKSECKE

Inside and outside corners made easy.

### DELTA®-THENE-BAND T 300

Specially tailored strips (0.3 x 10 m) for application to, for example, edges, corners, grooves, and pipe lead-throughs. Features split backing paper for easy working.

### DELTA®-FLEXX BAND

Highly adhesive self-sealing tape consisting of butyl rubber on a special cloth. May be plastered over.

# DELTA®



**DÖRKEN**  
Dörken GmbH & Co. KG  
Wetterstraße 58  
D-58313 Herdecke  
Tel.: +49 23 30/63-0  
Fax: +49 23 30/63-355  
bvf@doerken.de  
www.doerken.de

 A company of the Dörken Group

■ Delta Membrane Systems Ltd  
Delta House, Merlin Way,  
North Weald, Epping,  
Essex CM16 6HR.  
Tel: 01992 523 523  
Fax: 01992 523 250

info@deltamembranes.com  
www.deltamembranes.com



SINTEF Certification  
TG Nr. 20222



DELTA®-RADONSPERRE  
is certified as an effective  
barrier against radon.

DELTA<sup>®</sup> protects property. Saves energy. Creates comfort.

## DELTA<sup>®</sup>-RADONSPERRE

The barrier against radioactive radon entering from the ground.

No CO<sub>2</sub>.

No radioactivity.

DELTA<sup>®</sup>-Gas Barrier System.



■ Damp-proofing and protection

■ For foundation and building walls

■ For horizontal applications

**Extremely durable  
and tear resistant. The  
perfect solution for  
long-term protection.**



■ **DELTA®-RADONSPERRE**

Radon is a natural, radioactive inert gas that penetrates dwellings from the surrounding soil. Radon is a colourless, odourless gas which is radio active.

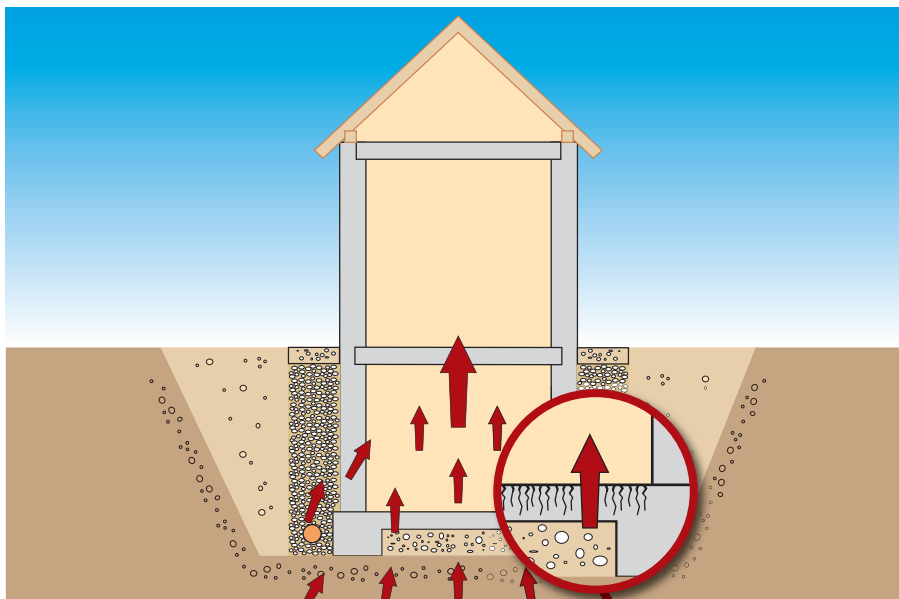
Where it occurs in high concentrations it poses a risk to health. The DELTA®-Gas Barrier System reliably and permanently protects from the ghostly threat of Radon, CO<sub>2</sub> and at the same time forms a dependable protection layer against rising damp.

Conforms to BR 211, BR 212 and Building Regulation Document C

**No unwanted gas in your home**

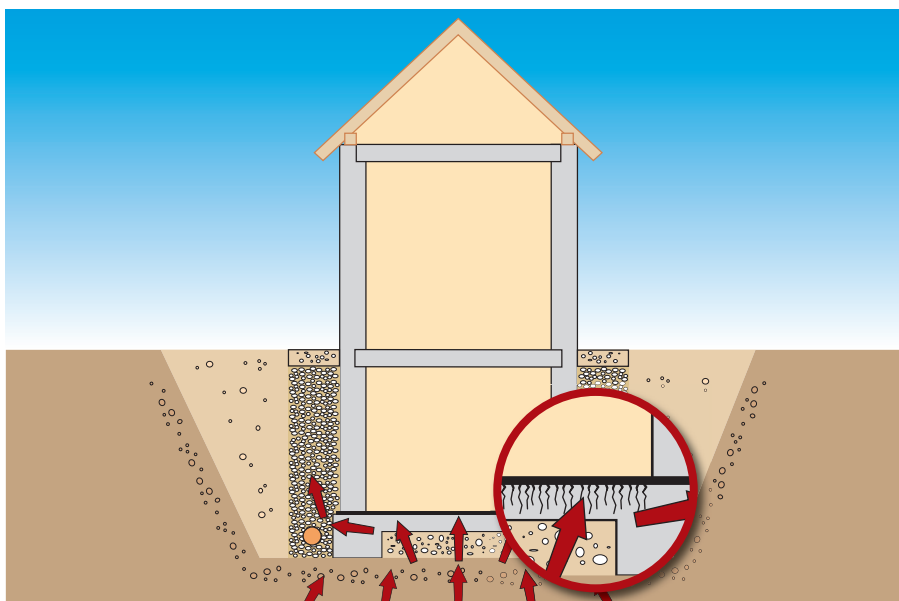
# DELTA®-RADONSPERRE

## Keeps your home safe from radon



**Radon gas, a ghostly threat.**

A by-product of the radioactive decay of uranium-238, radon is a natural, radioactive inert gas that is highly mobile by nature. Emanating from uranium-bearing rock, it penetrates cellars and apartments, exposing residents to long-term contamination without their noticing. After smoking, radon is the second most prevalent cause of lung cancer.



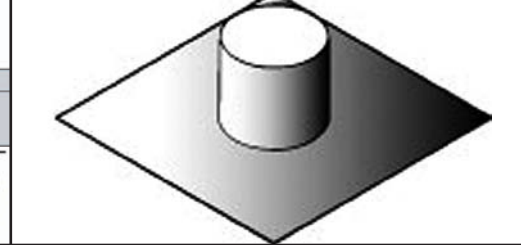
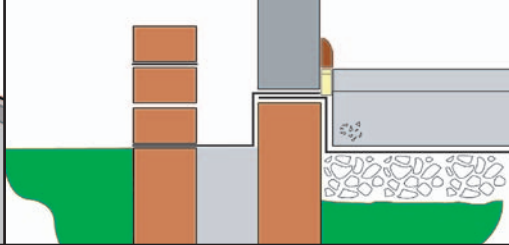
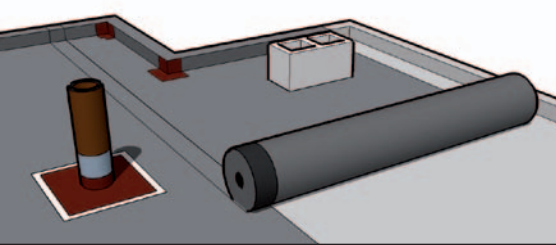
**Laying the ghost: surface gas drainage with DELTA®-RADONSPERRE.**

Laid out flat underneath the foundation slab, DELTA®-RADONSPERRE forms a safe barrier against rising radon gas. Next to horizontal drainage, there should be an unobstructed path for the gas to drain away upward. An all-round surface gas drainage will also keep rain and seepage water safely away from the building.

DELTA®-Quality branded products  
made by Dörken.

PREMIUM QUALITY





The overlap is easy to bond with DELTA®-THAN.

Flexibel and easy to adapt.

No problems with pipe penetrations.

# ERRE

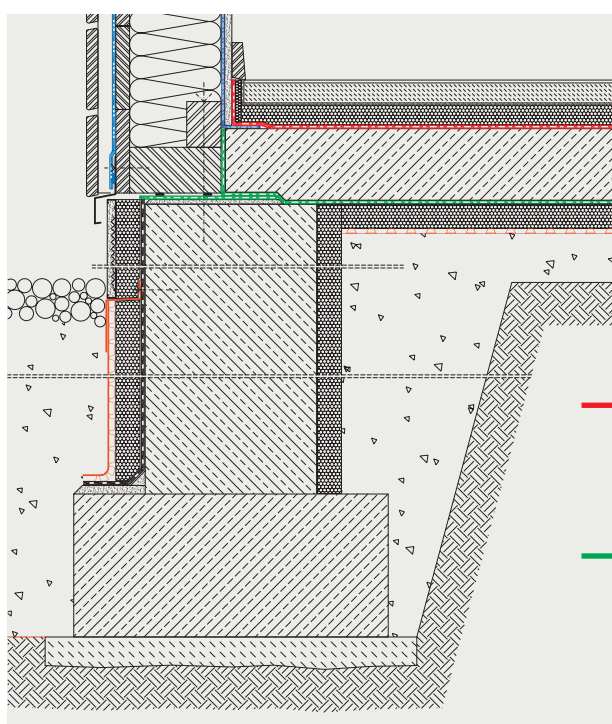
## on radioactivity.

The advantage of DELTA®-RADONSPERRE:  
easy to lay out on large surfaces.

- It consists of a special polyolefin blend forming a sheet approx. 0.4 mm thick and strong.
- With optional roll widths ranging up to 4 metres, DELTA®-RADONSPERRE can be easily and quickly put into place even on large surfaces, keeping overlaps to a minimum at the same time.
- DELTA®-RADONSPERRE is extremely durable and tough, eliminating any danger of stepping through the material.
- The anti-slip profile on both sides stabilises the sheet and optimises its adhesion to mortar.
- DELTA®-RADONSPERRE will not crack even at low temperatures. Being both flexible and formable, it will easily bend around corners.
- DELTA®-RADONSPERRE offers protection not only from the radiation of radon but also from moisture – even at extreme temperatures. The material will also serve as a damp course under plaster floors.
- The material is compatible with bitumen, resistant to degradation, and UV-stabilised.
- Tightly sealed with products from the DELTA® range of adhesives, DELTA®-RADONSPERRE becomes a barrier that is highly effective on surfaces as well as in overlaps and seams.



DELTA®-RADONSPERRE the barrier against radioactive radon entering from the ground.



- Laying after installation of the bottom plate on the smooth concrete surface in connection with further construction of the floor.
- Laying before installation of the bottom plate on a smooth surface of insulation.